

MONTHLY MEMBERSHIP PROGRESS REPORT

LOCATION ENGLAND

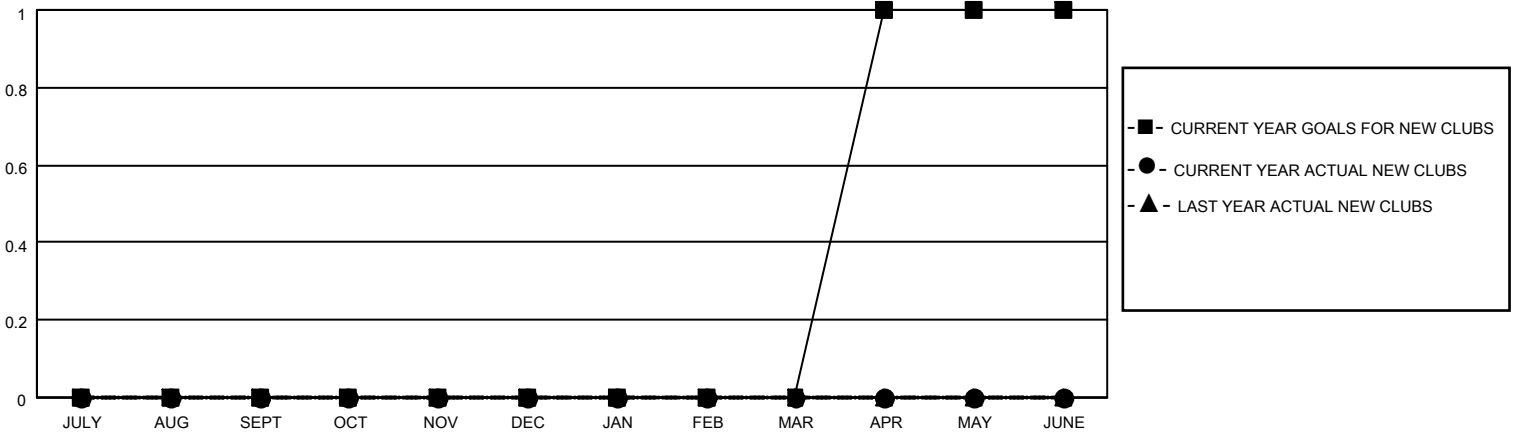
District 105SE

Results as of: 2/28/2023

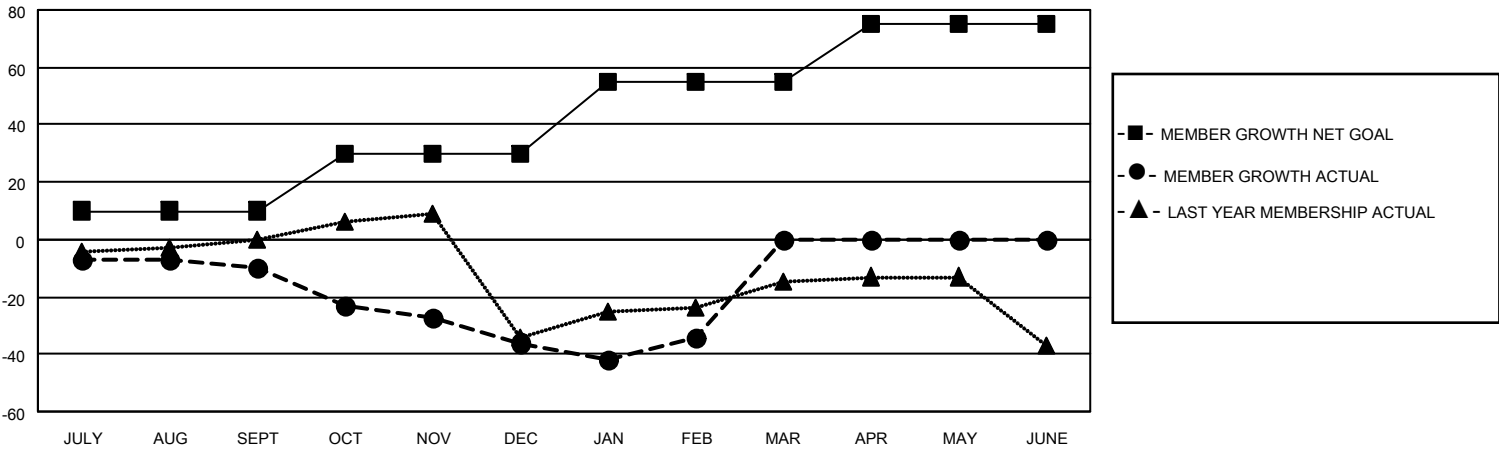
Clubs			
RESULTS FOR 2022-2023			
QUARTER	NEW CLUB GOAL	NEW CLUBS	DROPPED CLUBS
JULY/AUG/SEPT	0	0	1
OCT/NOV/DEC	0	0	1
JAN/FEB/MAR	0	0	1
APR/MAY/JUNE	1	0	0

Members			
RESULTS FOR 2022-2023			
QUARTER	MEMBER GROWTH NET GOAL	MEMBER GROWTH ACTUAL	DROPPED MEMBERS ACTUAL (including transfers)
JULY/AUG/SEPT	10	23	28
OCT/NOV/DEC	20	39	48
JAN/FEB/MAR	25	22	18
APR/MAY/JUNE	20	0	0

GOALS AND ACTUAL NEW CLUBS CUMULATIVE



GOALS AND ACTUAL MEMBERS CUMULATIVE



DROPPED CLUBS: 3	
<u>DROPPED MEMBERS</u>	
DECEASED	17
CLUB CANCELLED	0
OTHER	77
TOTAL	94

30 CLUBS OF 56 ADDED 1 OR MORE NEW MEMBERS

[CLICK HERE FOR CUMULATIVE MEMBERSHIP DATA](#)

<u>GENDER DISTRIBUTION</u>	
MALE	791 (68.84%)
FEMALE	357 (31.07%)
NON BINARY	0 (0.00%)
PREFER NOT TO ANSWER	1 (0.09%)
TOTAL FAMILY UNIT MEMBERS	
	120
FAMILY MEMBERS PAYING HALF DUES	
	60